

# TOP WEDDING LOCATION GUIDE

Inlighten Photography





## ABOUT INLIGHTEN PHOTOGRAPHY

---

We are so blessed to be living our best life through photography every day. We'd love you to pop by our favourite place, our Surry Hills studio, which we personally designed ourselves. Yep, it's not traditionally "Wedding" but it's fresh and bright, and inspires us every day.

Our love of the lens has taken us all over the world. But after shooting for more than 18 years, we know that shooting real people and real moments, is what we truly love - and weddings mean we get to do that every week.

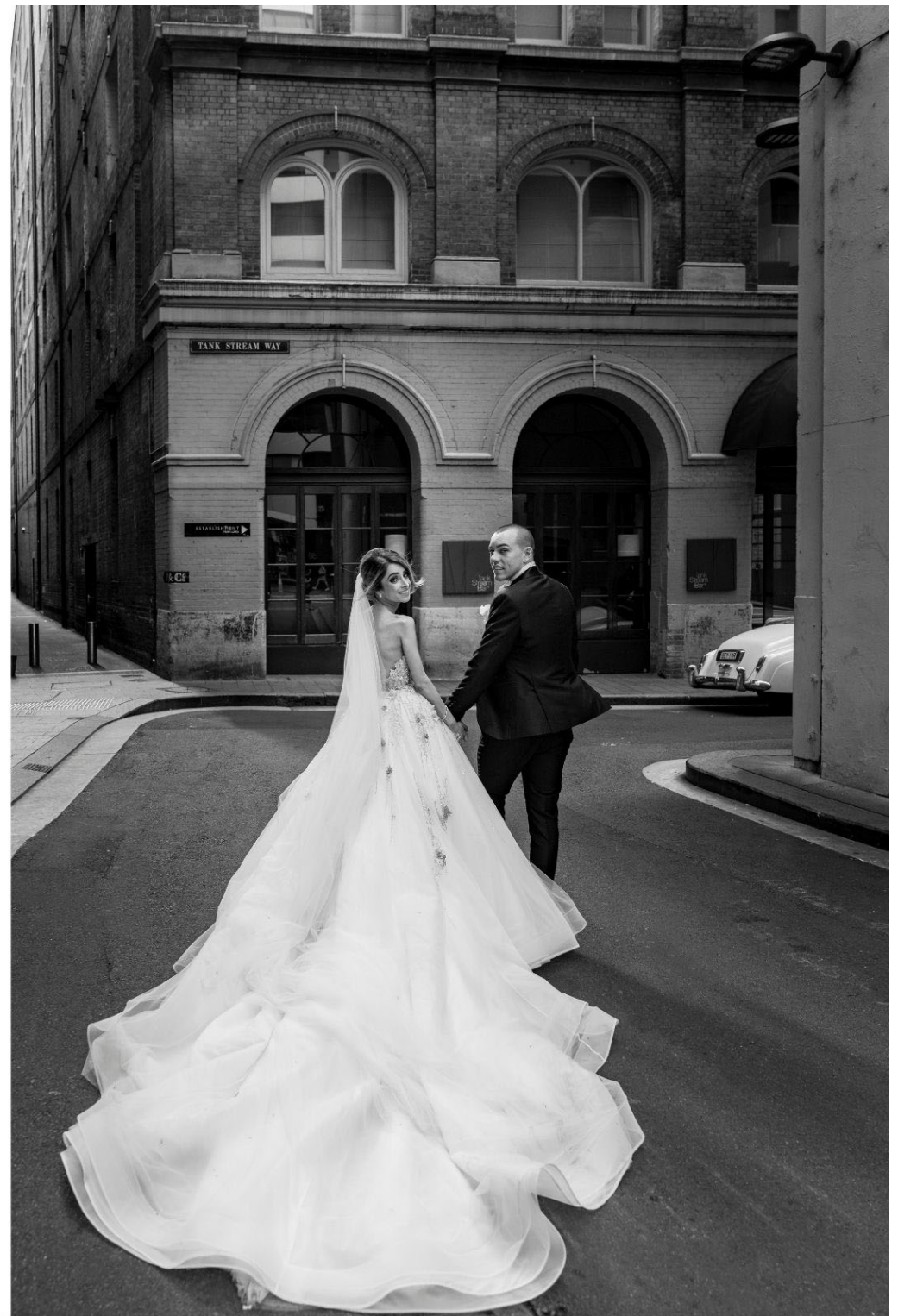


## SYDNEY STREETS & LANE WAYS

---

Elegant stone facades and architectural shapes, make the streets and lane ways all around Sydney an incredible backdrop for shooting your wedding photos.

From Tank Stream way (pictured) to Angel Place. From Martin Place to Sussex St. There are so many little hidden secret gems in lane ways, to capture truly unique photos.







## BRADLEY'S HEAD

---

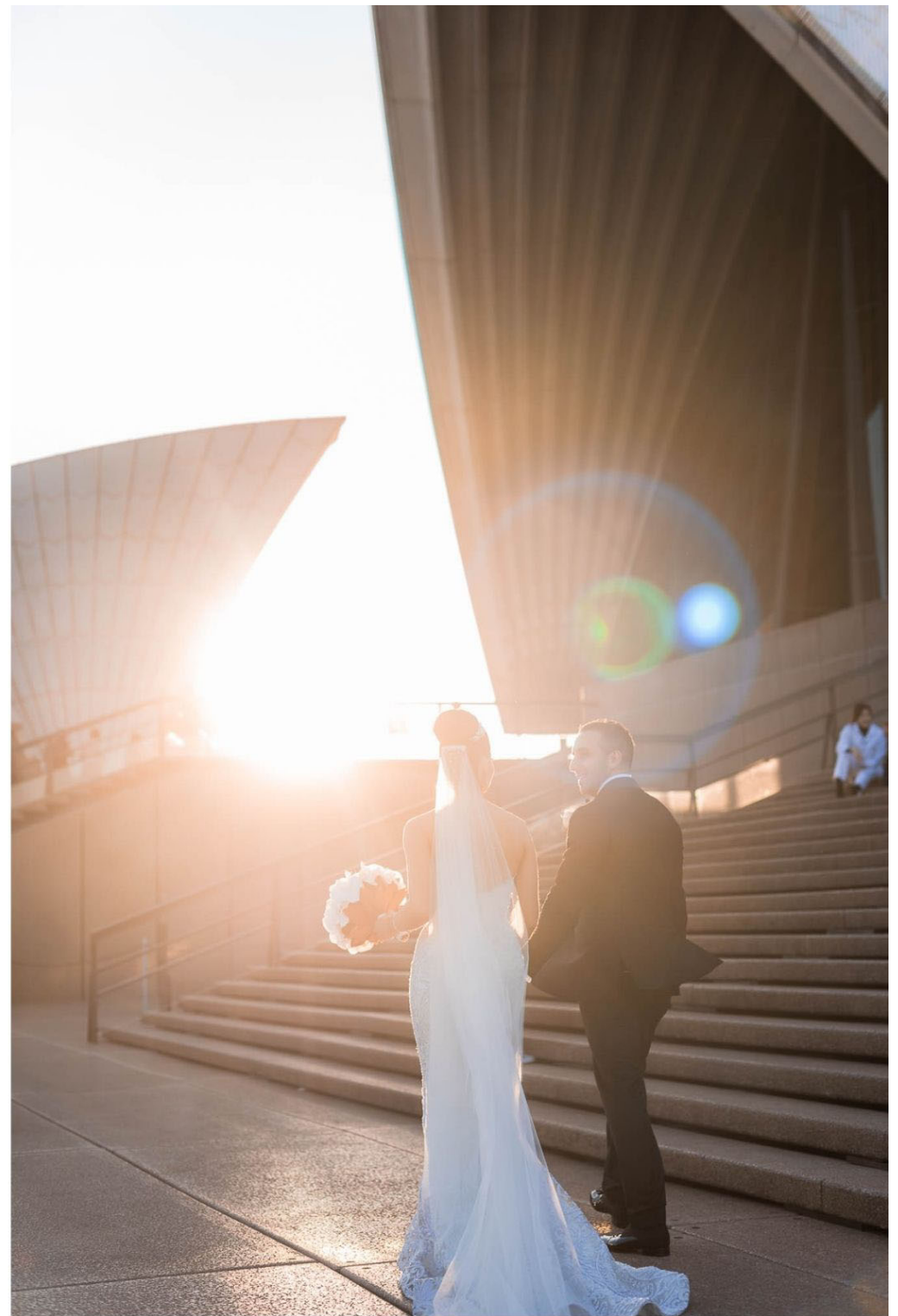
Located on the north side of the harbour, Bradley's Head is close by to a number of popular reception venues. It is accessed by a sweeping stone staircase that leads down to an amphitheatre that can also serve as a stunning ceremony location. A great way to be close to the beauty of the harbour, without getting your feet sandy.

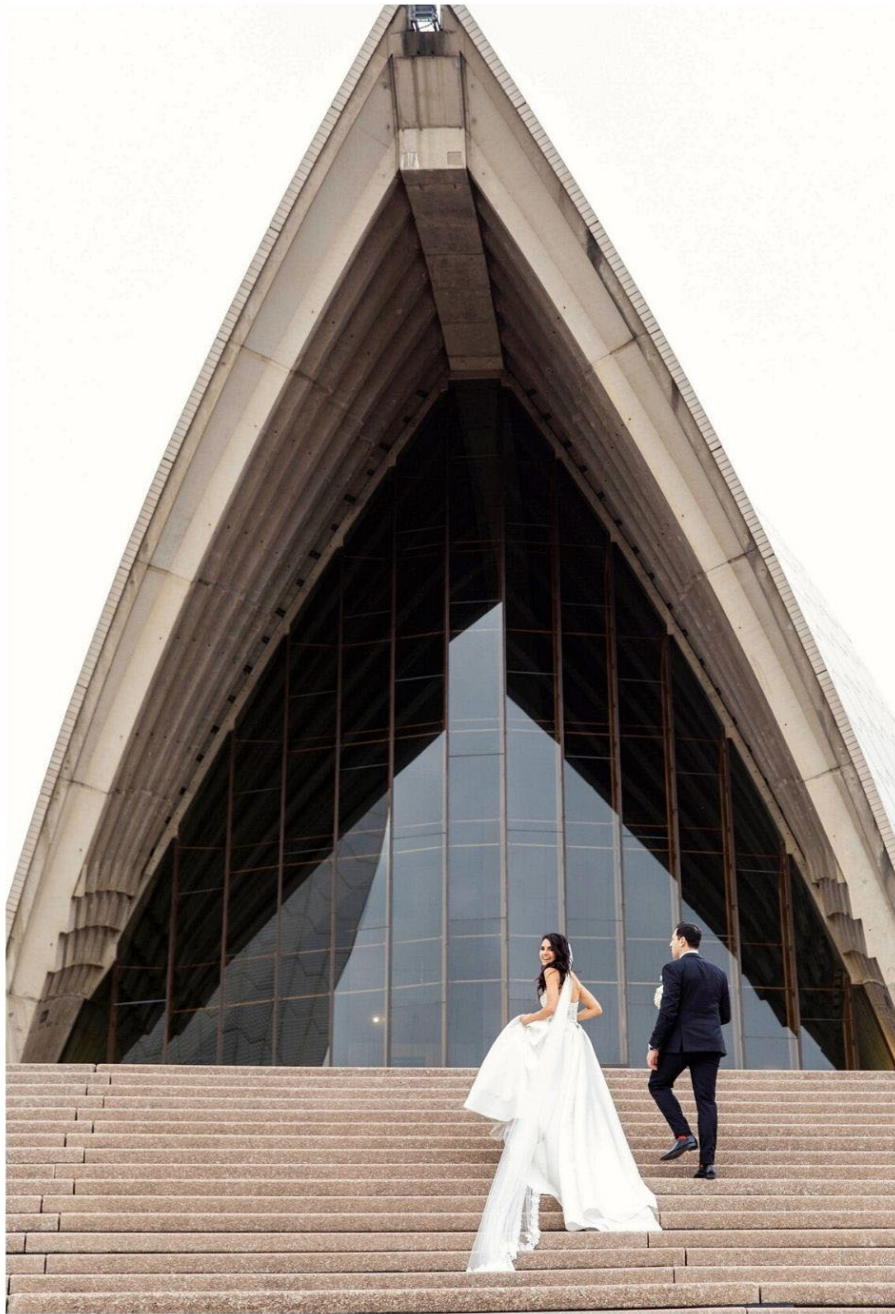


## SYDNEY OPERA HOUSE

---

There is nothing more iconic than the Sydney Opera House, so it's only natural that it features in many couples wedding photos. However that doesn't mean you can't put your own creative touch on this well known location. These photos featuring the late afternoon, golden sun, give our couples photos a warmth and softness, that is a juxtaposition with the angular lines of the Opera House.







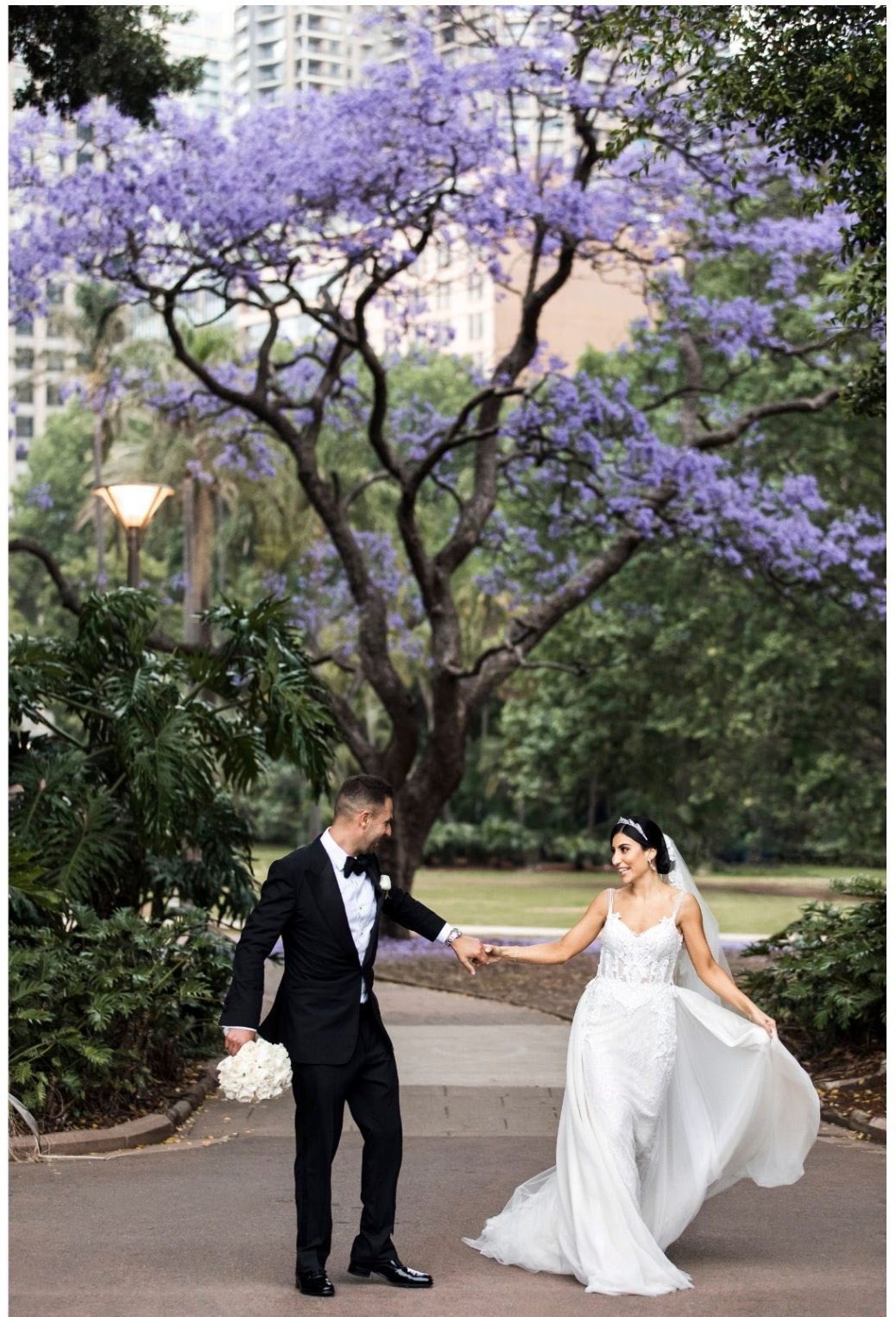


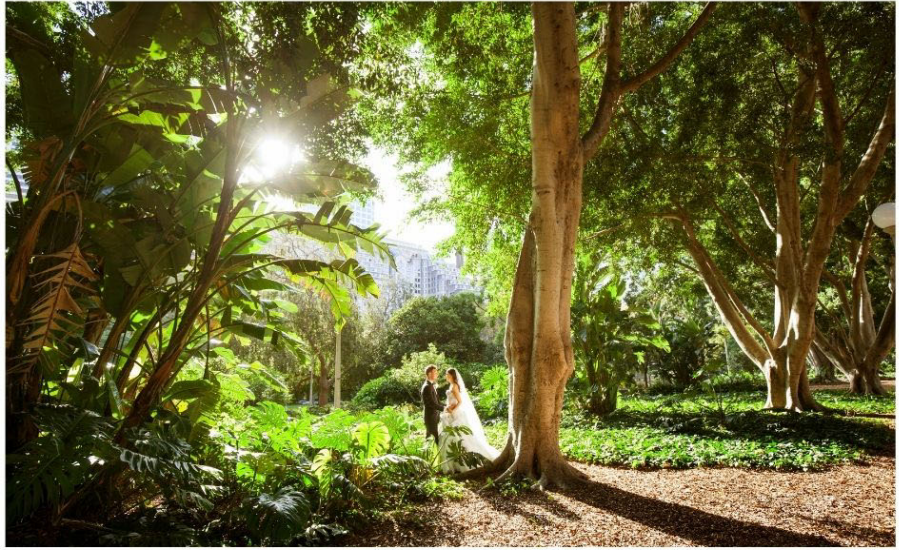
## HYDE PARK

---

A location with a completely different look depending upon the time of year and the flowers in bloom. It's like a garden oasis in the heart of the City.

With close proximity to many of Sydney's top wedding reception venues, Hyde Park is a favourite for creating intimate and romantic garden photos, that compliment a second architectural location in the city.





## CENTENNIAL PARK

---

If a soft, light and whimsical feel is your style, you simply cant go past Centennial Park. Centrally located in the heart of Sydney, with easy access by your Wedding Cars. Centennial Park features a variety of looks within the one location, fromthe Pine Woods to the soft, tall grass pictured. Ultimate shooting time is in the golden hour before sunset.







## THE WHARVES

---

Creating a rustic charm in your photos, while still allowing sweeping fresh views across the harbour, the wharves around Sydney allow us to create a blend of romance and epic photos.

Some of our favourite wharves to shoot are near Walsh Bay, close to Barangaroo, as well as Jones Bay Wharf and the Finger Wharf in Woolloomoolloo.



## SYDNEY HARBOUR BRIDGE

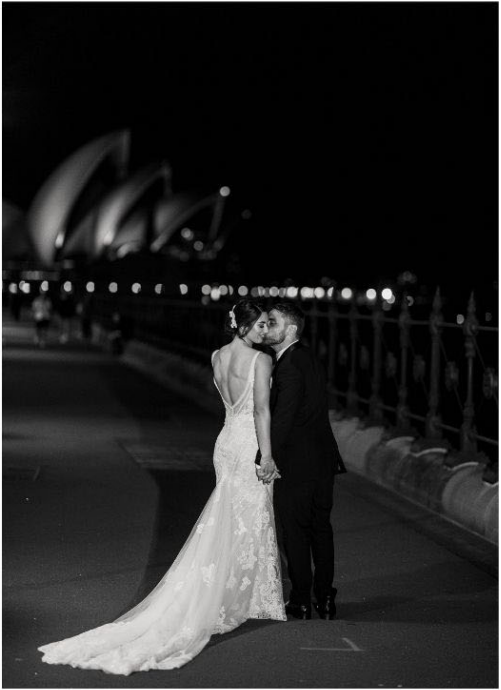
---

An iconic beauty that is not to be underestimated. Ensure your photographer has a remote flash, and the Sydney Harbour Bridge is the perfect backdrop for day or night shots. And just because you're under the Harbour Bridge doesn't mean that it needs to be featured in its entirety in every shot. Glimpses can be just as beautiful while setting the scene of your love story.







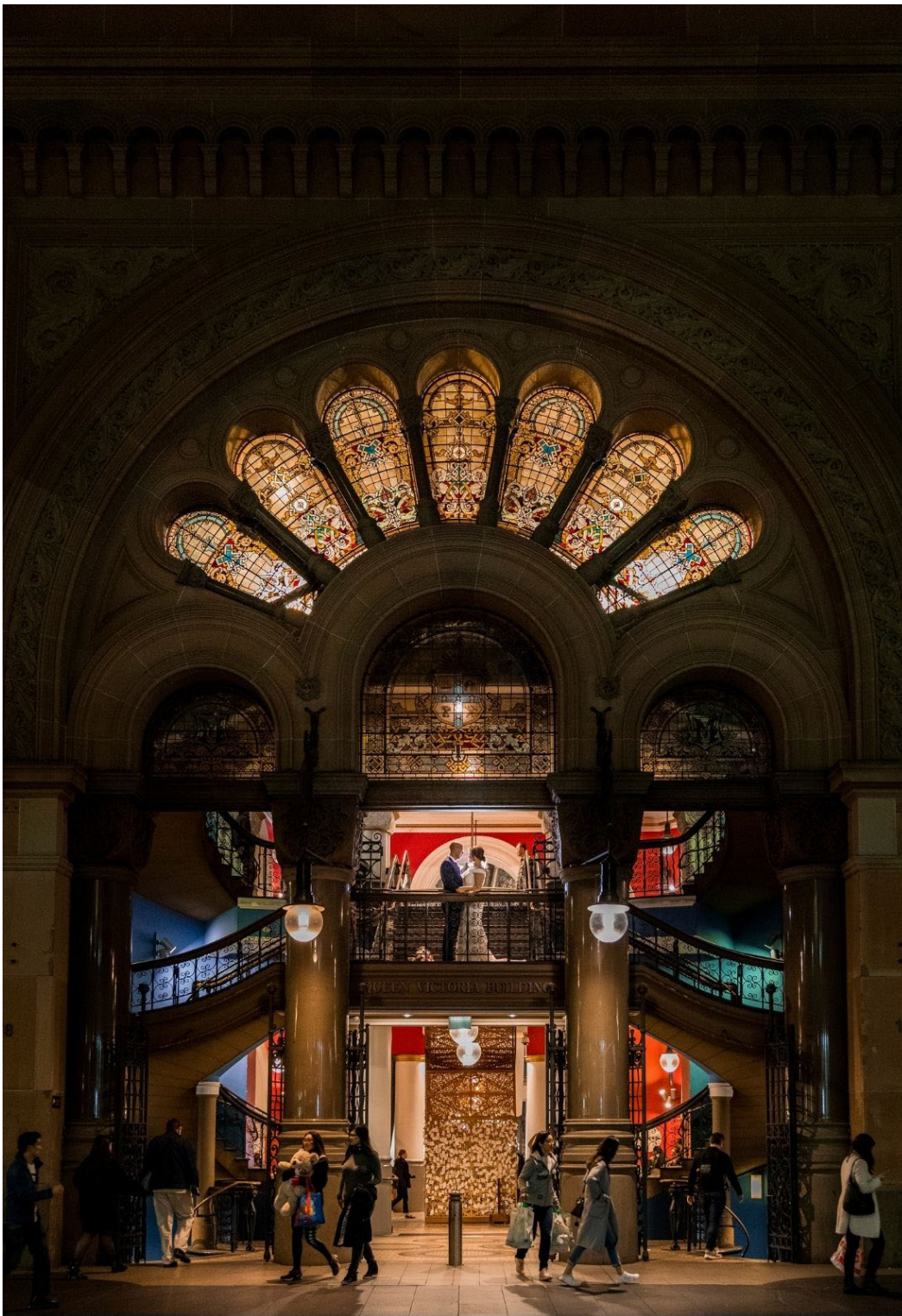


## THE QUEEN VICTORIA BUILDING

---

Romance and elegance from the Victorian age, right in the heart of the city. Whether shooting the inside or the outside of the building, the QVB creates a look of opulence and stylishness. The ornate staircases throughout also allow photographers to capture a multitude of different angles.







## **PADDINGTON RESERVOIR**

---

A true hidden gem, hiding right in plain sight on Oxford Street in Paddington. Travel down the stair case to this garden oasis of hanging ferns, stone archways and refelctive pools of water.



## DESIGNER SHOPS

---

Bring the luxury of your wedding day details into your photos, with a soot outside some of Sydney's most iconic luxury brand shops.









## **THE GOWINGS BUILDING**

---

Shooting inside with a light source positioned away from the camera, is the perfect way to create a glamorous and sensual look to your photo collection. The bar at the Gowing Building creates a mood and atmosphere that is warm and rich.

---

## THE STEPS OF THE ART GALLERY

---

Located inside the Botanical Gardens, the steps of the Art Gallery can be the perfect compliment to a location shoot in the Botanical Gardens. Stone steps and turn of the century lamps create a classic and old world look in your photos.



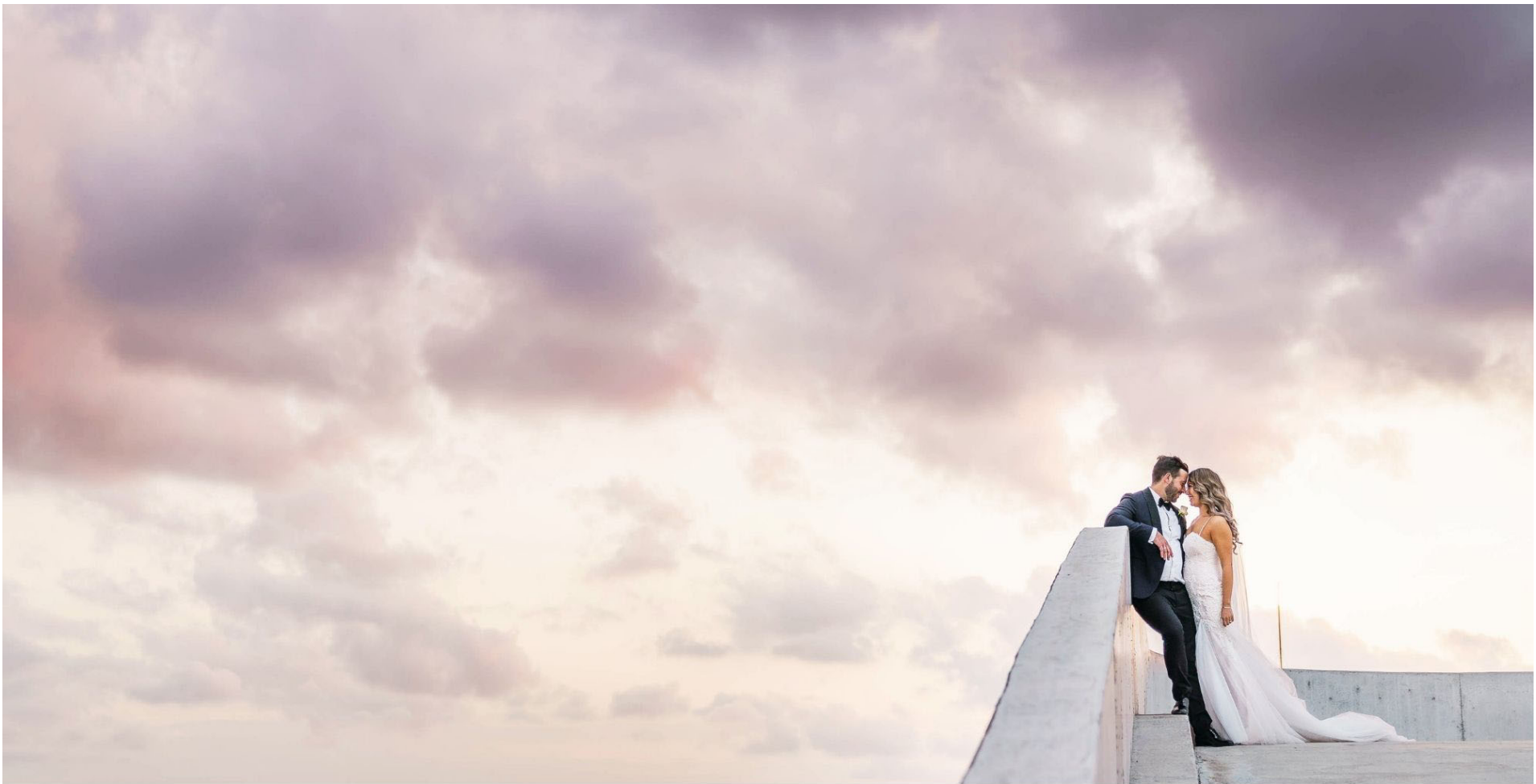




## **COOGEE CLIFF TOPS**

---

Can you imagine a more secluded and epic location for your wedding photos? A winter sunset creating pink and orange tones in the sky has enriched this location either further. A great location for couples who have a little extra time available between their ceremony and location.



## CITY CAR PARKS

OK, this one is not for the faint of heart. But if you're looking for a truly edgy and unique look to your wedding photos, shooting on the top of one of the city's multi story car parks can give you some incredible photos that will actually leave you saying "I cant believe where we were when that was taken!"

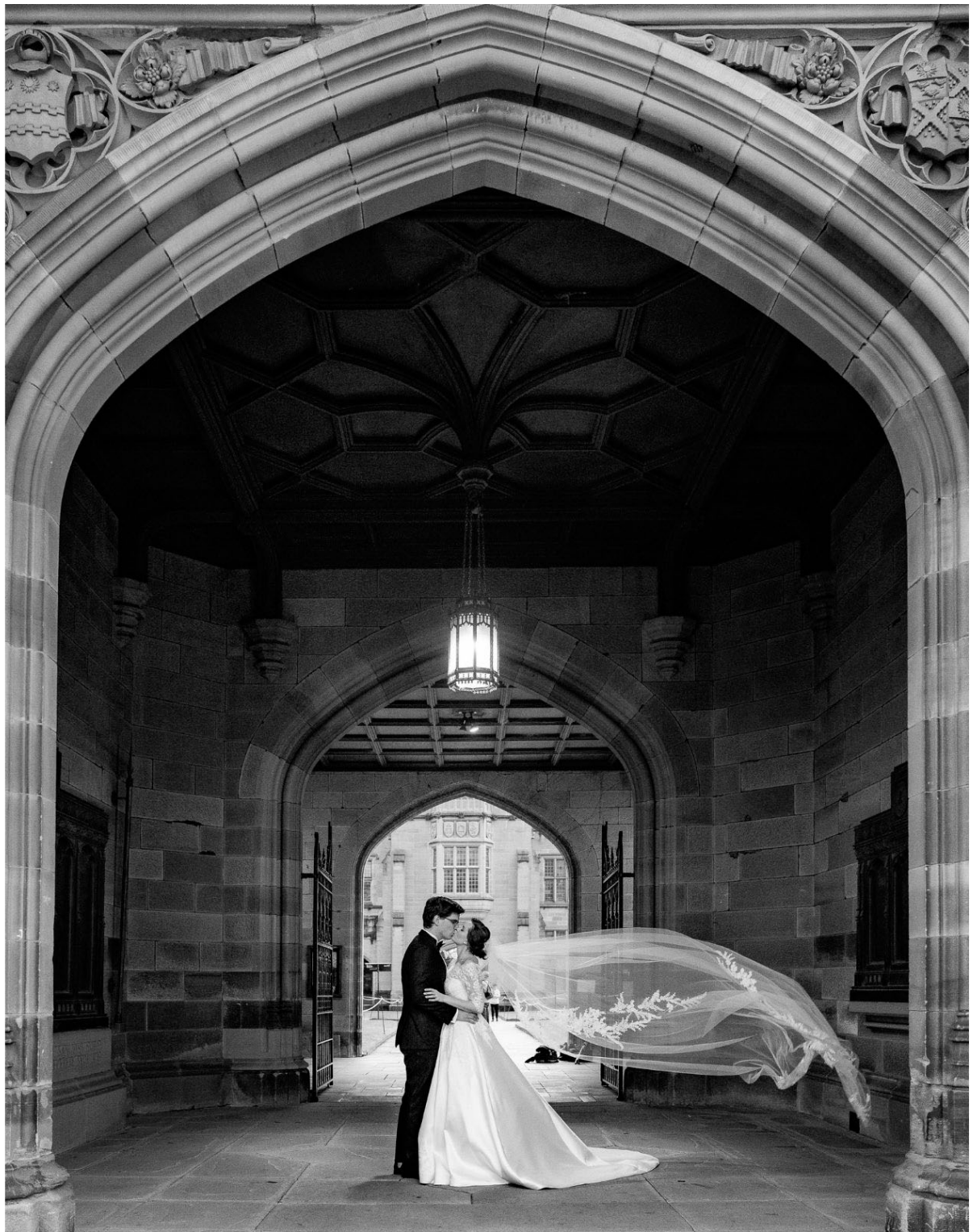




## SYDNEY UNIVERSITY

---

Located outside the centre of the city in Camperdown, Sydney University's elegant castlesque buildings will add a grandeur to your photos that is hard to find elsewhere in Sydney.





INLIGHTEN  
PHOTOGRAPHY

---

[info@inlighten.com.au](mailto:info@inlighten.com.au)

[inlighten.com.au](http://inlighten.com.au)

02 9550 0332

[instagram/inlightenphotography](https://www.instagram.com/inlightenphotography)

[facebook/inlightenphotography](https://www.facebook.com/inlightenphotography)

